

## Surge Protection Update: New Regulations 2025

If you've been putting off thinking about surge protection, now's the time to pay attention. Major changes to BS 7671 (Amendment 2) have arrived, reshaping how we handle surge protection in commercial buildings.

The big news: Surge Protection Devices (SPDs) are now mandatory for most commercial installations. Think of SPDs as your building's electrical bodyguards – they protect your equipment from power surges by redirecting excess current safely to the ground.

The new regulations require SPDs in four key scenarios:

1. When over-voltage could risk life or cause serious injury
2. Where safety-critical electrical equipment is involved
3. If power surges could disrupt your commercial operations
4. In buildings where large groups of people could be affected

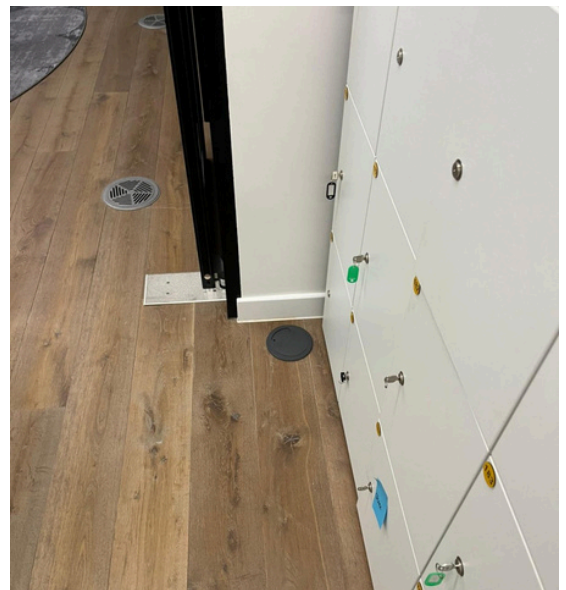
If you haven't already, it's time to take a look at your building's surge protection needs. SPDs come in various sizes, from small units to industrial-scale systems, so there's a solution for every setup.

Remember: Your equipment is at risk even when it's switched off. Those innocent-looking power spikes? They're slowly wearing down your expensive electrical systems. Also, this isn't just about compliance – it's about protecting your investment and ensuring business continuity.

## The Maple Street Project

The Maple Street office renovation project exceeded expectations, marking a significant win for our infrastructure team. In a short space of time we completely overhauled the building's power and data infrastructure to support modern workplace needs.

The backbone of our upgrade centred on the installation of new CAT6A data lines and dedicated 20-amp electrical circuits throughout the office space. These additions were strategically placed to support the revised layout. One of our key innovations was the installation of floor-mounted power grommets – sleek, flush-mounted access points that now power the office's new iPad-based security system. These tablets serve as digital check-in points for visitors and employees, replacing the outdated sign-in sheets with a streamlined access control solution. The grommets were carefully positioned at each entrance point, seamlessly integrating technology with the office's modern design.



We also tackled what had become a daily frustration for the staff – insufficient power for their high-end coffee equipment. The upgrade from a 20-amp to a 32-amp commando socket might seem like a small change, but it was crucial for supporting their new commercial-grade coffee machine. This modification not only prevented circuit trips but also future-proofed the space for additional kitchen appliances.

The project's success demonstrates how thoughtful infrastructure improvements can transform a workspace, supporting both current operational needs and future technological requirements. The team's attention to detail and forward-thinking approach have created a robust foundation for the office's continued growth and evolution.

Plus it was great to get feedback like this from the client...

'I'd like to express my gratitude to your team. Jak and Mitch have been great on-site, and I'd love to work with you again!'

## 'Team Member of the Month' award

At Kent Electrical, we firmly believe that recognising and celebrating our employees' contributions is not just a nice-to-have—it's fundamental to our success and growth strategy. Our commitment to acknowledging exceptional performance drives our unique 'Team member of the Month' award program.



This recognition initiative reflects our understanding that motivated, appreciated employees are the backbone of our expansion plans. Each week, we carefully select one standout team member who has demonstrated excellence in their role, whether through exceptional customer service, innovative problem-solving, or outstanding teamwork.

The "Team Member of the Month" award isn't just about celebrating individual achievement—it's about fostering a culture where excellence is noticed and rewarded. This program has become a cornerstone of our company culture, inspiring healthy competition and encouraging everyone to bring their best to work each day.

As we continue to grow and expand our operations, we remain dedicated to maintaining this personal touch. Our weekly recognition program helps ensure that even as we get bigger, we never lose sight of the individual contributions that make our success possible. It's programs like these that help us maintain our family-oriented culture while pursuing our ambitious growth objectives.